

**FUJIFILM**  
Value from Innovation

# *Flex*Can

STEERABLE ERCP CANNULA



# OVERCOMING COMPLEX CANNULATION WITH FLEXIBILITY

Cannulation is one of the most challenging steps in ERCP. FlexCan is the only ERCP cannula in the market that delivers unprecedented bending and rotational performance, providing enhanced controllability and helping clinicians efficiently overcome cannulation challenges, even within complex and difficult anatomy.

## OPTIMISED BENDING FOR PRECISE AND EFFORTLESS CONTROL

The tip is designed to achieve 90-degree angulation even in challenging endoscopic position with excellent responsiveness, enabling precise control when required. The thin cannula bends just 9 mm from the tip, ensuring effortless manoeuvrability even in narrow lumens.



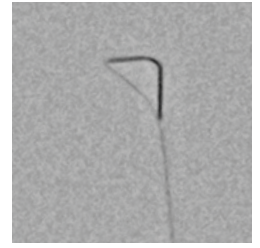
## ADVANCED ROTATABILITY FOR CHALLENGING CANNULATIONS

The tip rotates up to 360 degrees in both directions, providing complete directional control within the lumen. This enhanced rotatability helps clinicians to navigate challenging anatomy and overcome difficult cannulations.



## **CLEAR X-RAY AND ENDOSCOPIC MARKERS**

The cannula features highly visible X-ray and endoscopic markers, ensuring clear and accurate indication of its positioning and location during procedures.



## **FLEXCAN FOR STANDARD AND ENTEROSCOPE-ASSISTED ERCP**

FlexCan features a thin diameter and is available in both long and short versions, ensuring full compatibility not only with standard duodenoscopes, but also with both short and long enteroscopes. Its enhanced bending and rotational capabilities facilitate cannulation with front-view enteroscopes in ERCP for patients with altered anatomy.



# SPECIFICATIONS

Product code	Material code	Characteristics	Working length (mm)	Min. Ø Working channel (mm)	Compatible guidewire	Unit
CAN1-S1-18-200-35	70100171111	Rotatable, Bendable	2000	2.8	0.035"	1
CAN1-S1-18-260-35	70100171110	Rotatable, Bendable	2600	2.8	0.035"	1



Manufactured and distributed by  
FUJIFILM medwork GmbH  
Medworkring 1, 91315 Höchstadt, Germany  
www.medwork.com

Sales Contact:  
FUJIFILM Healthcare Europe GmbH  
Balcke-Dürr-Allee 6, 40882 Ratingen, Germany  
endoscopy\_eu@fujifilm.com

© 2026 FUJIFILM Healthcare Europe

Specifications are subject to change without notice.  
All brand names or trademarks are the property of their respective owners.  
In some countries, regulatory approval may be required to import medical devices.  
For proper use of the products, be sure to read the instruction for use prior to use.  
For the availability of these products, please contact your local sales representatives.